

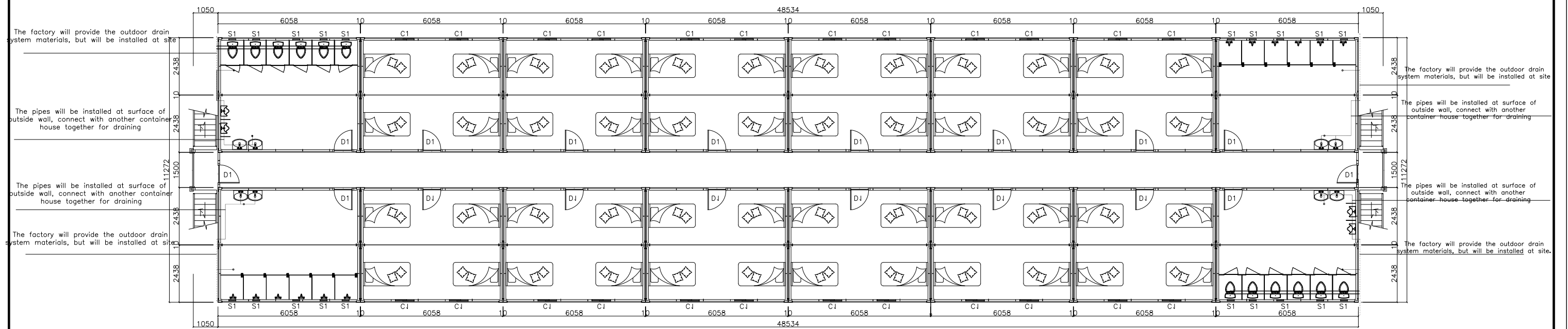
Layout plan

D1	Steel security door: 900*2100mm
W1	PVC sliding window + roller up shutter: 800*1100mm
S1	Ventilation fan: 300*300 with PVC frame

Note:

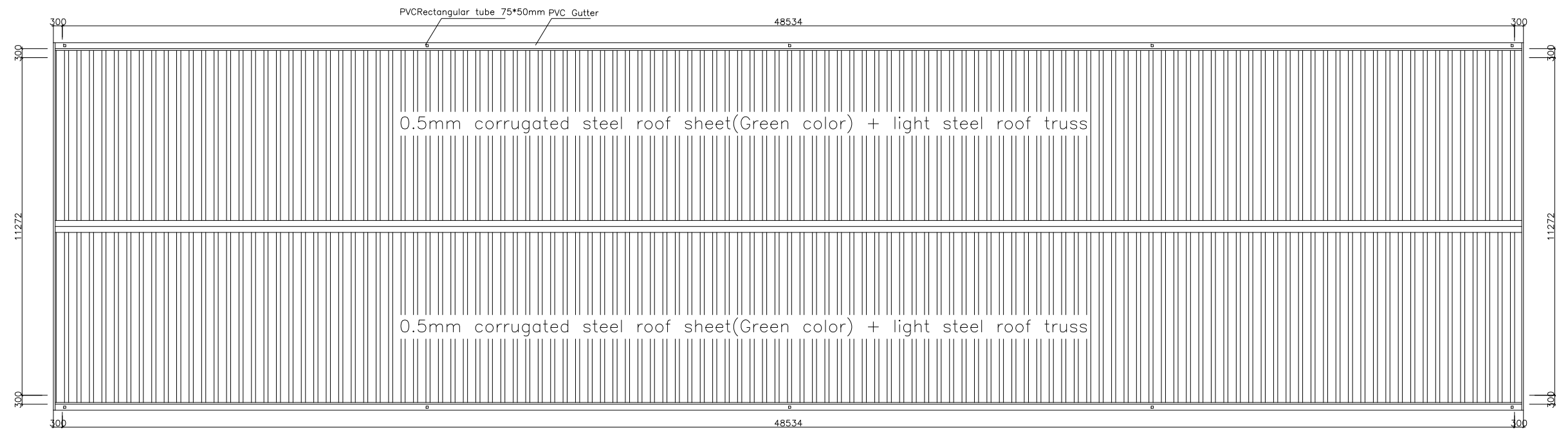
The inside floor: cement-fiber board+PVC floor sheet
 The corridor: light steel keel+18mm cement-fiber board+PVC floor sheet
 The toilet room floor: cement-fiber board+Aluminum checkered plate
 Wall: 75mm EPS sandwich panel, both two sides are 0.45mm colorbond steel sheet

		Zhejiang Putian integrated housing Co., Ltd. Hangzhou Zhongpu Architecture Design (institute) Co., Ltd.			
Project name 工程名称	Project No. 工程编号 PTXC15155	Designer 设计人 沈耀	Drawer 制图员 沈耀	Assessor 审核	Page 图号 01
Item 图项	Category 设计阶段	Proofreader 校对	Date 日期	2016.04.14	Proportion 比例 1:100

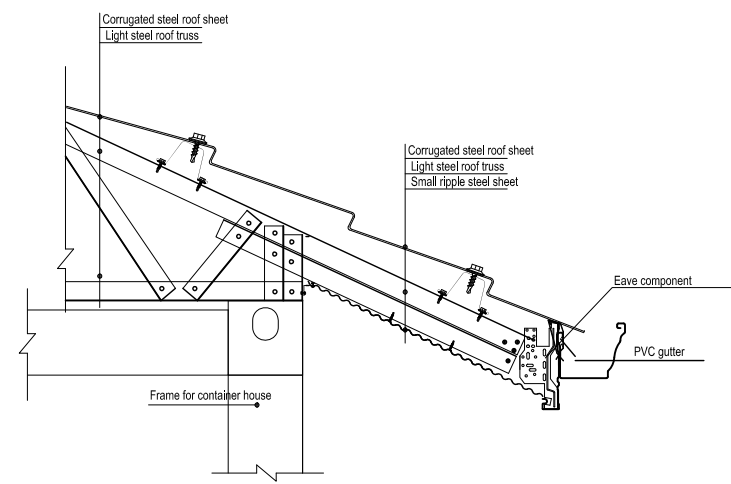


Layout for 2nd floor

Project name 工程名称	Project No. 工程编号 PTXC15155	Designer 设计师 沈耀	Drawer 制图员 沈耀	Assessor 审核	Page 图号 02
Item 图项 集装箱	Category 设计阶段	Proofreader 校对	Date 日期 2016.04.14	Proportion 比例 1:50	

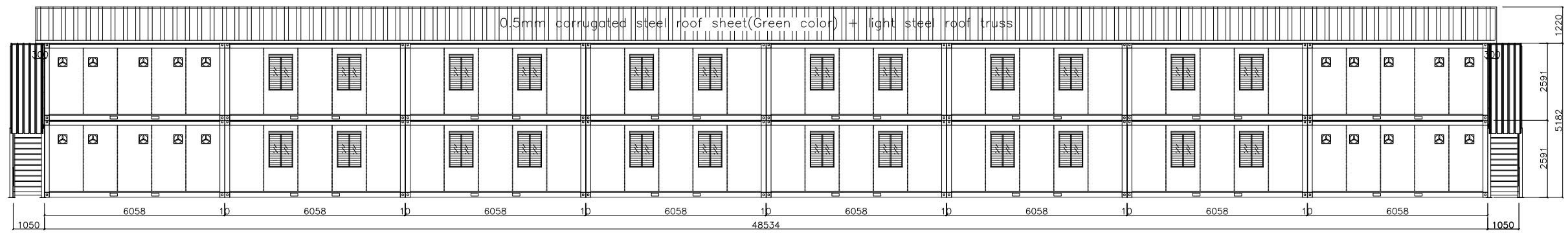


Layout for roof plan

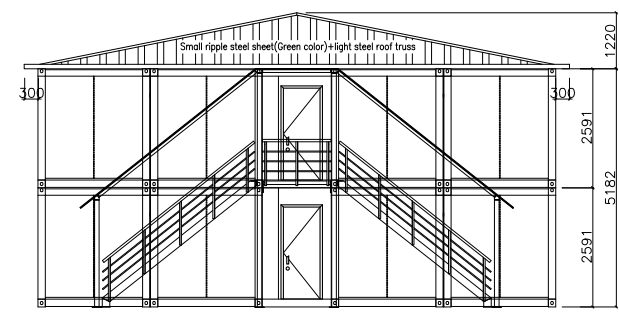


Details for Gutter

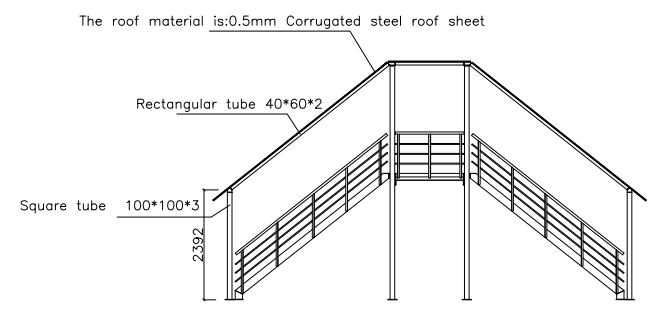
 Zhejiang Putian integrated housing Co.,Ltd. Hangzhou Zhongpu Architecture Design (institute)Co.,Ltd.					
Project name 工程名称	Project No. 工程编号 PTXC15155	Designer 设计人 沈耀	Drawer 制图员 沈耀	Assessor 审核	Page 图号 03
Item 项	Item 项	Category 设计阶段	Proofreader 校对	Date 日期 2016.04.14	Proportion 比例 1:50




A

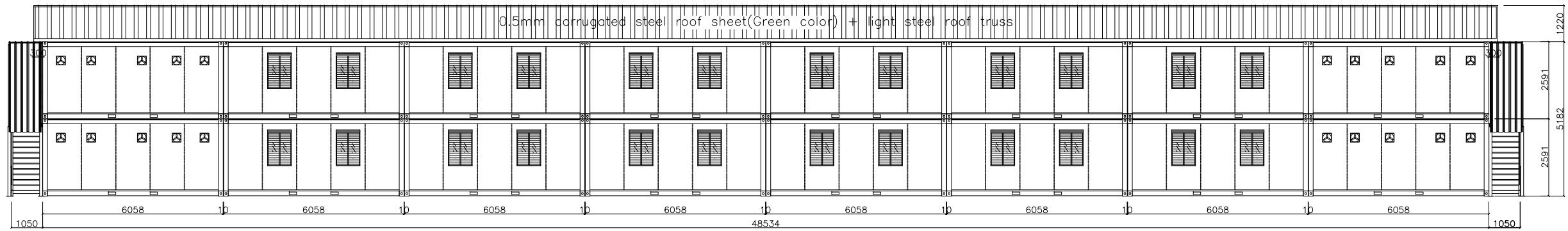


B

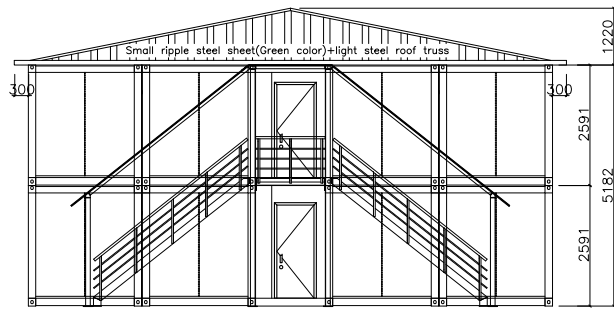


楼梯

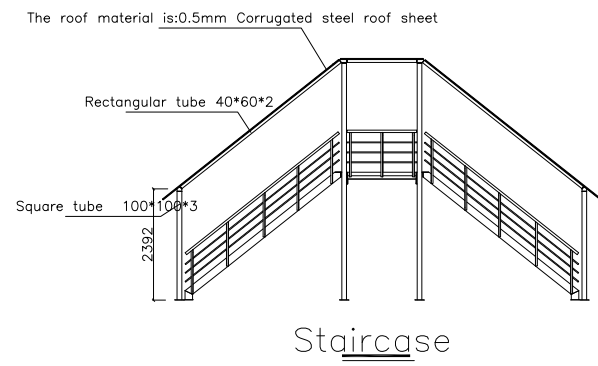
		Zhejiang Putian integrated housing Co.,Ltd. Hangzhou Zhongpu Architecture Design (institute)Co.,Ltd.			
Project name 工程名称	Project No. 工程编号	Designer 设计人	Drawer 制图员	Assessor 审核	Page 图号
集装箱	PTXC15155	沈耀	沈耀		04
Item 图纸名称	立面布置图	Category 设计阶段	Proofreader 校对	Date 日期	Proportion 比例
				2016.04.14	1:50




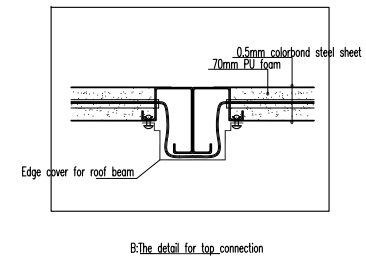
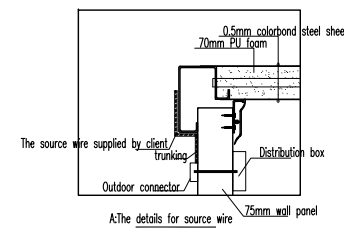
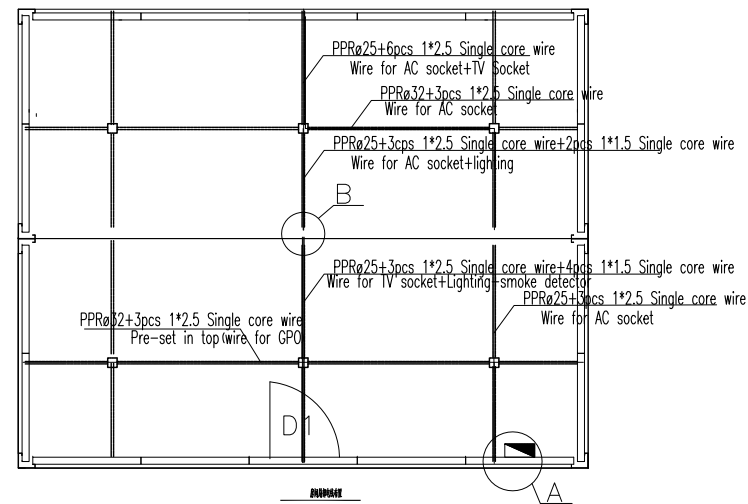
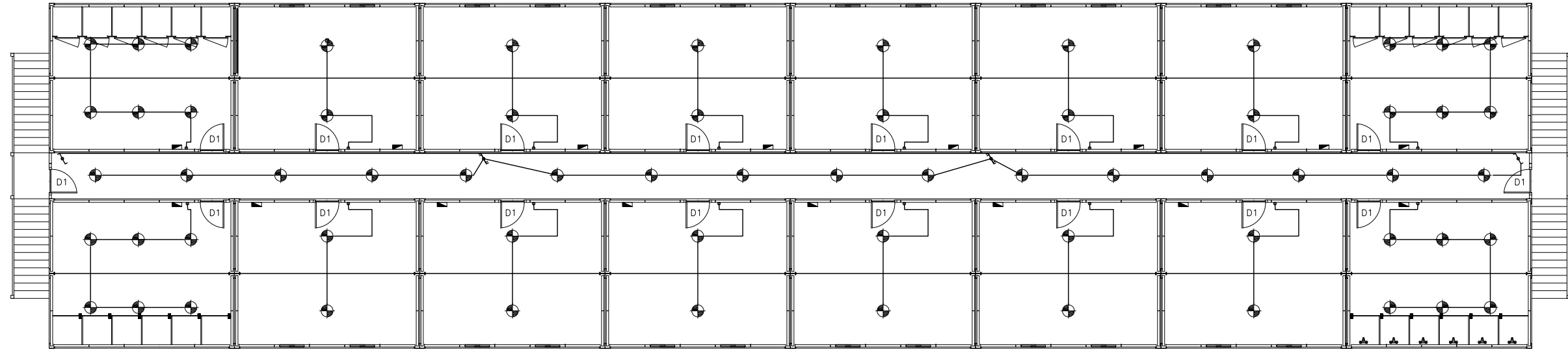
C



D



 Zhejiang Putian integrated housing Co.,Ltd. Hangzhou Zhongpu Architecture Design (institute)Co.,Ltd.					
Project name 工程名称	Project No. 工程编号 PTXC15155	Designer 设计师 沈增	Drawer 制图员 沈增	Assessor 审核	Page 图号 05
Item 图项 立面布置图	Category 设计阶段	Proofreader 校对	Date 日期 2016.04.14	Proportion 比例 1:100	

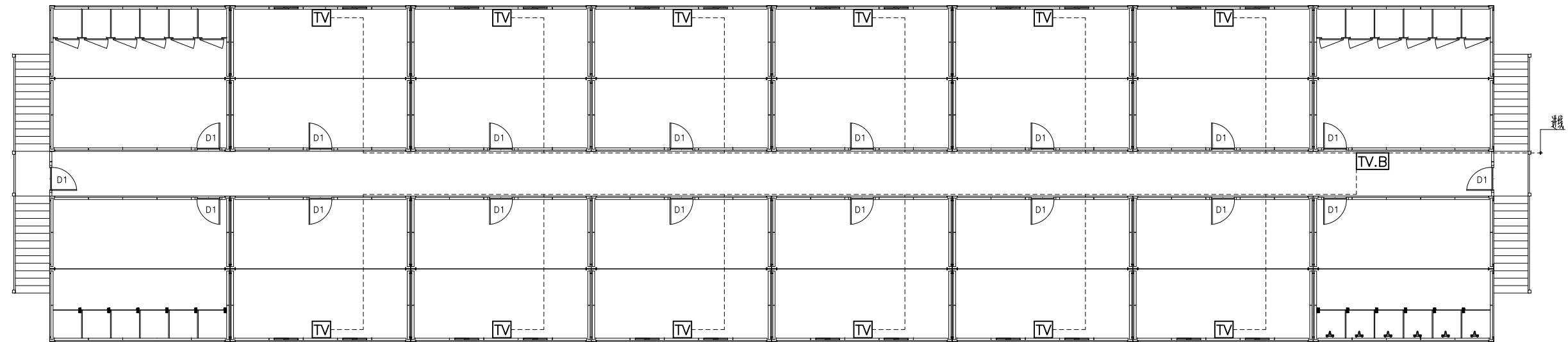


Note: the height position for switch:1200mm

Logo	Item	Standard(Specification)
	Single control switch	According to the quotation listed
	Double control switch	According to the quotation listed
	Round light	According to the quotation listed
	Distribution box	According to the quotation listed


 Zhejiang Putian integrated housing Co.,Ltd.
 Hangzhou Zhongpu Architecture Design (institute)Co.,Ltd.

Project name 工程名称	Project No. 工程编号 P1XC15155	Designer 设计人 沈耀	Drawer 制图员 沈耀	Assessor 审核	Page 图号 05
集装箱	图纸名称 项灯、开关布置图	Category 设计阶段	Proofreader 校对 业务员	Date 日期 2016.03.28	Proportion 比例 1:100

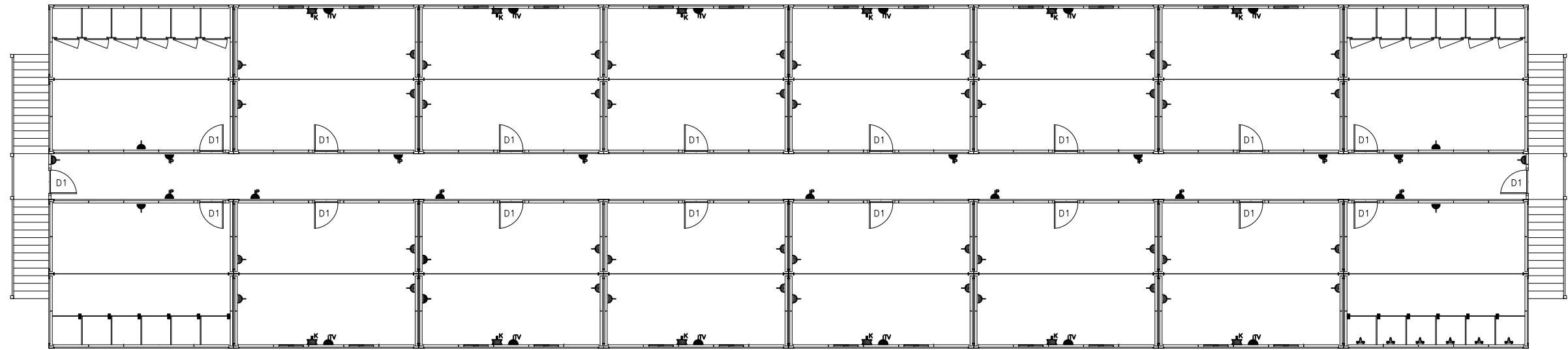


The factory will pre-set the conduit and junction box, the TV cable need to be installed at site





Note: The TV sockets' position height: 1200mm, the factory supply the wire

Logo	Item	Standard(Specification)
	TV SOCKET	According to the quotation listed
	TV splitter	According to the quotation listed

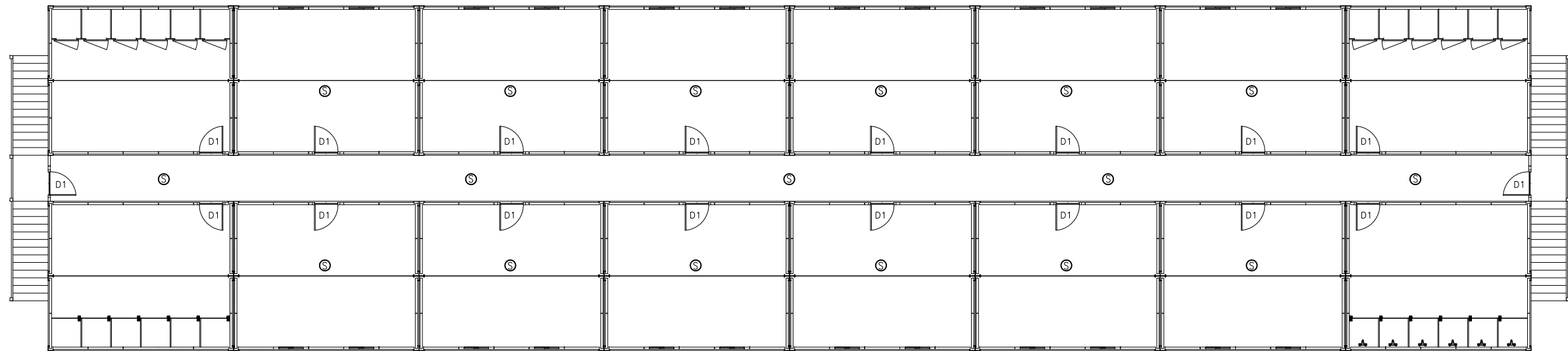
Zhejiang Putian integrated housing Co., Ltd. Hangzhou Zhongpu Architecture Design (institute) Co., Ltd.					
Project name 工程名称	Project No. 工程编号 PTXC15155	Designer 设计师 沈耀	Drawer 制图员 沈耀	Assessor 审核	Page 图号 07
Item 图例	Category 设计阶段	Proofreader 校对	Date 日期 2016.04.14	Proportion 比例 1:50	




Note: The height for GPO is:300mm,the factory supply the wire
 The height for AC socket is:1800mm,the factory supply the wire
 The height for TV socket is:1200mm,the factory supply the wire
 The emergency lights' socket,from the nearest container
 distribution box,the height is: 2300m,the factory supply the wire

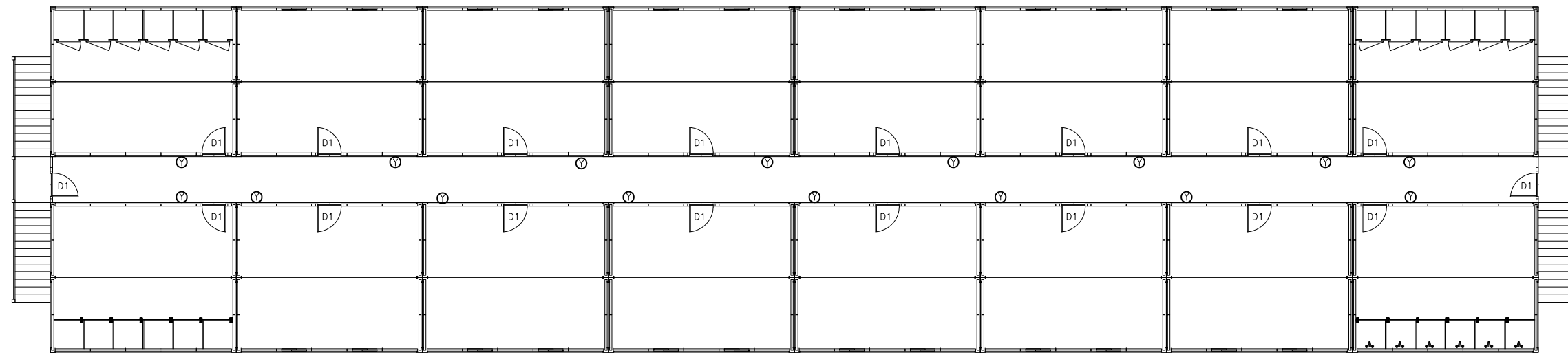
Logo	Item	Standard(Specification)
	GPO	According to the quotation listed
	A/C socket	According to the quotation listed
	TV socket	According to the quotation listed
	Emergent light socket	According to the quotation listed

 Zhejiang Putian integrated housing Co.,Ltd. Hangzhou Zhongpu Architecture Design (institute)Co.,Ltd.					
Project name 工程Item	Project No. 工程编号 PTXC15155	Designer 设计师 沈耀	Drawer 制图员 沈耀	Assessor 审核	Page 页号 08
Item 项名称	Category 插座布置图	Category 设计阶段	Proofreader 校对	Date 日期 2016.04.14	Proportion 比例 1:50




Logo	Item	Standard(Specification)
Ⓢ	Smoke detector	According to the quotation listed

 Zhejiang Putian integrated housing Co.,Ltd. Hangzhou Zhongpu Architecture Design (institute)Co.,Ltd.					
Project name 工程名称	Project No. 工程编号 PTXC15155	Designer 设计师 沈耀	Drawer 制图员 沈耀	Assessor 审核	Page 图号 09
Item 项名称	Category 设计阶段	Proofreader 校对	Date 日期 2016.04.14	Proportion 比例 1:50	



Logo	Item	Standard(Specification)
⊙	Emergent light	According to the quotation listed

 Zhejiang Putian integrated housing Co.,Ltd. Hangzhou Zhongpu Architecture Design (institute)Co.,Ltd.					
Project name 工程名称	Project No. 工程编号	Designer 设计师	Drawer 制图员	Assessor 审核	Page 图号
	PTXC15155	沈耀	沈耀		10
	Item 图项	Category 设计阶段	Proofreader 校对	Date 日期	Proportion 比例
	应急灯布置图			2016.04.14	1:50